



BehindTech

Build Beyond Limits

**BEHINDTECH**  
Technical Services LLC  
**PROFILE**

[www.behindtechgroup.com](http://www.behindtechgroup.com) | [info@behindtechgroup.com](mailto:info@behindtechgroup.com)

# About Us

Behind Tech Technical Service LLC was established in 2020 by a group of experienced faculties under a visionary leader with great passion to work. We are mainly concentrating in interior fit-out & Maintenance works including Light Gauge partitions, various kinds of false ceilings, Painting & wall paper works, marble works, Vinyl & Raised Floors, Hard Landscape, Ramps Balustrades, Bollards & Various MEP installations etc.

Our team members are highly passionate & Hard working. We grace our clients with Quality, Punctuality & Consistency. We hold a straight & Transparent business relationship with the clients. By Virtue of our experience with facilities of similar nature, we understand many of the business issues you face, and propose proven practice designed to maximize uptime, comfort and other attributes. We build, Renovate and Maintain your facility in most appealing & cost effective manner. We convert the Shell & cores into the beauty of a facility fulfilling the function it has been meant for & client's requirement.

Behind tech has since continued to expand & diversify its services, establishing ultimate business entities within UAE.



Behind Tech



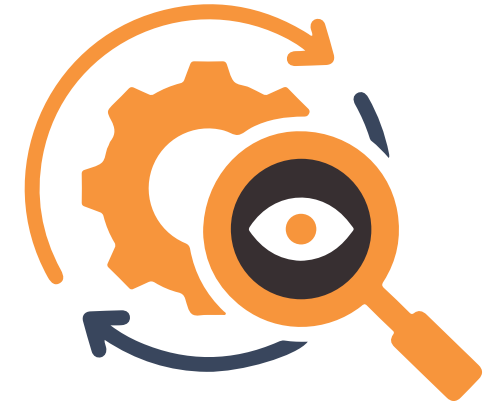
# Why Behind Tech LLC?

We provide Equal Importance to our clients. We recognize the overall business objectives of our clients & the role of the facilities in enabling these objectives to be met. Understanding these relationships enables Behind Tech LLC to manage the risks of failure, improve facilities availability while at the same time producing cost savings that can be shared by both parties.

We listen to our clients to ensure that we deliver the right solutions at the right time and our asset management solutions evolve with the client's needs. We deliver on our promises and build long-term relationships based on confidence, trust, and transparency. Our ultimate aim is to provide our clients with the lowest long term cost at the best industry service levels.

# Our Vision

Our Vision is to Reach & Sustain as one of the top ranked Interior fit out & Fabrication Brand in GCC. Unlike the most common similar establishments, we are easily accessible with different ranges of products which will help anyone & everyone to modify their living or working environment as they wish to look & feel. We offer hazard free & unrestricted communication with the client, irrespective of the value of work we are committing. We respect the curiosity of our customers who invest & excited to see their dream come true by make-sure the on time completion of all the committed projects. Our job will speak to the customers in maintaining the long term good relation with every client we work with. We believe that the Excellence & Efficiency are not a skill but with the Inspiration & Passion to work we try to make it as an attitude.



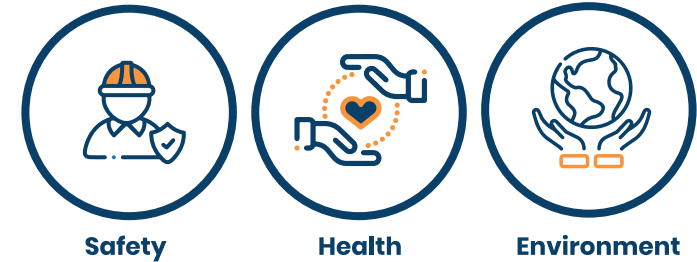
# Mission



Our Mission is to select, analyses & deliver the finest product to gain complete satisfaction & happiness of the client thus to extend the interpersonal as well as the business relationship from short term alliance to everlasting bonding. We reinforce our team with specialists in each attributes to endorse the end product should remain the superior touch. We use only the genuine products according to the budgetary requirements of the client. We have standard, proven installation techniques with tag as Approved installers of many of the latest installation systems which is guaranteed by the manufacturer directly. We maintain a calm & friendly atmosphere within the organization so us to have a broad mind to conceive things easily & get the best outcome while executing the clients feeling into reality.



# Health, Safety and Environment



Corporate wellness has exploded in recent years. There are some hurdles to clear before a program, can not only be implemented but also be effective. Corporate wellness relies on the collective health & fitness of the workforce. Hence we maintain high standards of occupational health & hygiene at all our work place. Protection of the employee against the health hazard at the working environment, compliance to health and safety legislation & Making the work place healthier and safer is out constant objective. We endeavor to make our workplace a safe working environment.

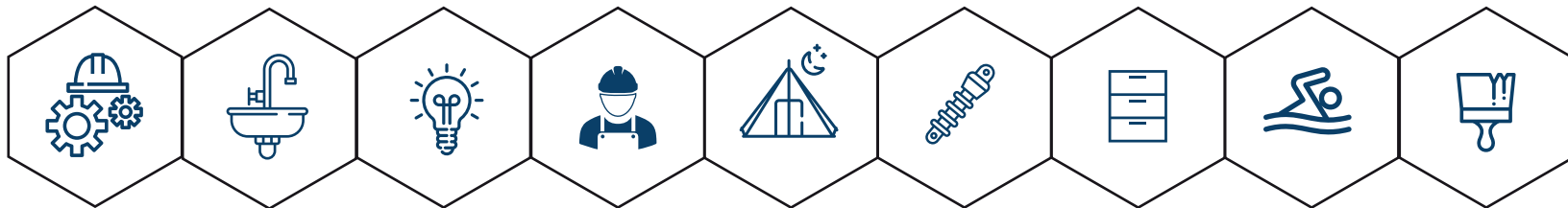
We are not only committed to working in a safe responsible manner, respecting the health of our employees but also ensuring the environmental obligations. Our Environmental goal is to promote development that improves the total quality of life, both now and in the future. We constantly strive to set & accomplish targets that endorse optimum efficiency of the natural resources used and thus reduce the impact of our operations on the environment.

## How We works

We offer ample time to Listen, understand & design the best possible solutions by selecting the finest materials from worldwide market to gain the client complete satisfaction. Our Experienced Estimation engineers will do value engineering to make sure that our clients are not losing for no reason. We offer complete budget transparency framed to have a serious guarantee on savings. Our skilled & hard working Technicians will establish the same on ground with their talent under the close supervision of Experienced Engineering staffs.

# Our Services

- Light Partition & Various types of False ceiling Works
- Painting - Wall, Ceiling, Floor, Doors, Car parking & play ground with Floor Markings, Stair balustrades, Ladders etc
- Installation of Wall papers.
- Tile Works - Wall & floor
- Installation of Bollards & Ramps
- Installation of Kitchen Cabinets & Wardrobes
- Installation of Fenders, Wall & corner guards
- Installation of Vinyl Flooring
- Installation of Paddock Rail
- Installation of Water & feed manger
- Installation of Rubber Protection on walls (Nursery schools & Stables etc)
- Installation of Stair Balustrade (Wall & Floor Mounted)
- Laying of Interlock & Kerb stone
- Building general cleaning.
- Annual Maintenance contracts
- MEP Final Fixes
- Over all maintenance (Apartments, Office, Schools etc)







## Our Clients





[www.behindtechgroup.com](http://www.behindtechgroup.com) 

## OUR CONTACT PERSON'S

**Ms. Anjana**

(Managing Director)

☎ 052 260 8293

**Mr. Subin TK**

(Sr. Engineer)

☎ 052 968 4498

**Mr. Jithin Tom Sebastian**

(Estimation and costing)

☎ 052 968 4499

**Mr. Ratheesh K.P**

(Administration and cost control)

☎ 052 968 4344

Web: [www.behindtechgroup.com](http://www.behindtechgroup.com)

Email: [info@behindtechgroup.com](mailto:info@behindtechgroup.com)